



**NAME:**

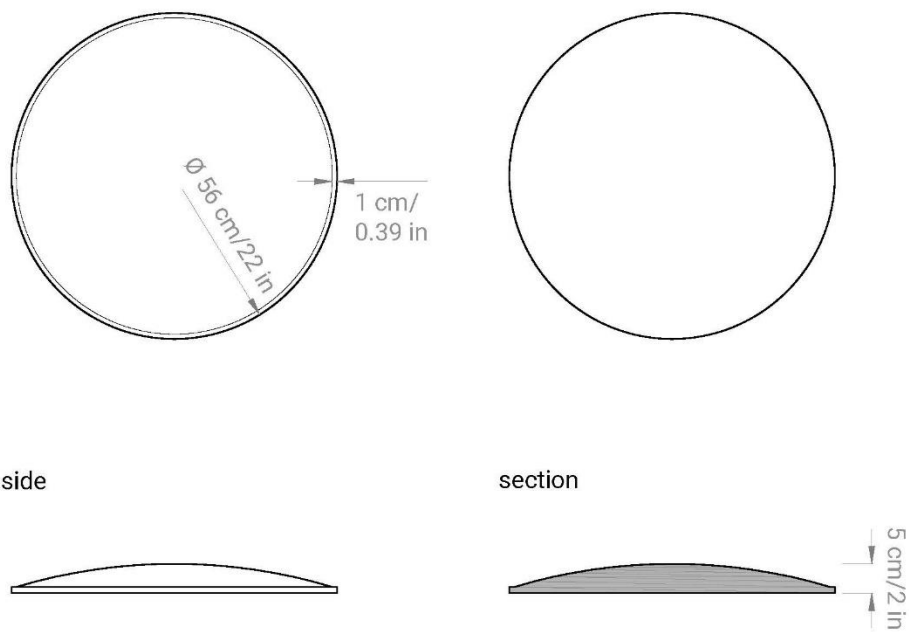
ECObubble

**DESCRIPTION:**

Thermobonded sound-absorbing monomateric panel

**APPLICATIONS:**

- Wall with velcro
- Ceiling with velcro



**DIMENSIONS:**

- $\varnothing 56$  x THK 5 cm
- $\varnothing 22$  x THK 2 in

NOTE: *Panels may have differences in thickness due to the type of material*

**WEIGHT:**

- 3,2 Kg/m<sup>2</sup>
- 0.65 lb/ft<sup>2</sup>

**COMPOSITION:**

- Soul: sound absorbing material made of 100% recycled material, polyester fibers

Reaction to fire: B-s2, d0

Smoke class: F1

Certificate: Oekotex

- Finishing CAT **A**:

- **Trevira CS** - 100% polyester

Reaction to fire: **Class 1**

Certificate: **Oekotex**

- **PETfabric** – 100% recycled polyester

Reaction to fire: **Class 1**

Certificate: **Oekotex**

- **PETcolor** - 100% PET, FR recycled polyester + GRS

Reaction to fire: **Class 1**

- **ECOfelt** - 90% wool, 10% polyester

- **PETfelt** - 100% PET – From post-consumer plastic bottles

- **Velvet** - 100% polyester

- Finishing CAT **B**:

- **Tweed** - 75% wool, 25% polyamide

Reaction to fire: **Class 1**

- **Trace** - 100% Trevira CS FR, FR polyester

Reaction to fire: **Class 1**

Certificate: **Oekotex**

**RECYCLABILITY:**

Recyclable material panel recyclable at the end of his life, without having to divide soul and finishing

**MAINTENANCE:**

Cleanable panel with specific detergents

**CERTIFICATIONS:**

• **FIRE REACTION CLASS:**

B-s2, d0



• **CE MARK:**

B-s1, d0



• **GREEN LABELS:**

GREENGUARD  
GREENGUARDGOLD



• **VOC EMISSION TEST**

Indoor Air Comfort GOLD



• **SOUND ABSORPTION REPORT:**

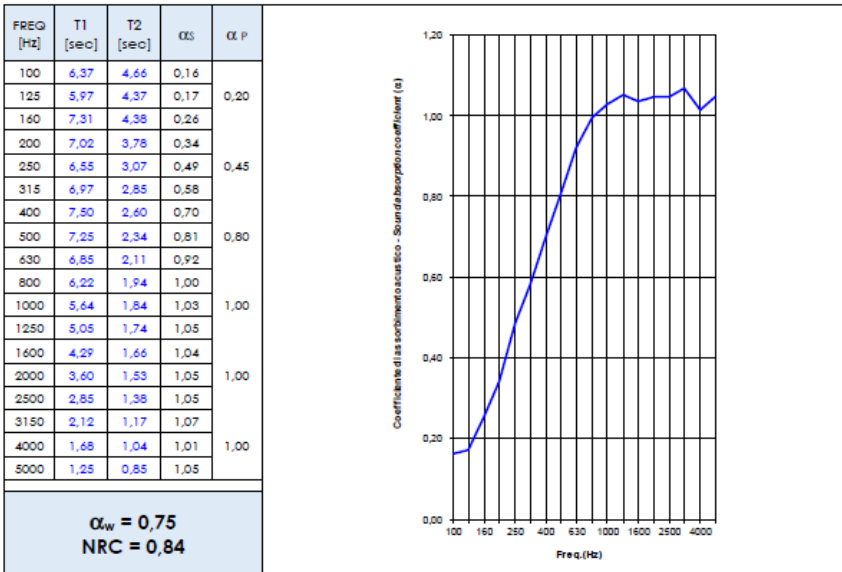
UNI EN ISO 354: 2003

UNI EN ISO 11654: 1998



**ECOBUBBLE:**

Elemento in prova Tested element	ECOBUBBLE + ECOROUND
Descrizione del campione Sample description	Vedere § "Descrizione del campione in prova" del presente Report. Montaggio tipo A secondo EN 354 / See § "Tested sample description" of this Report. Type A mounting according to EN 354
Superficie del campione Sample surface	11,0 m <sup>2</sup>



# CAT A



## COMPOSITION

100% Trevira CS FR, poliestere Fr  
100% Trevira FR CS, polyester Fr



# Trevira CS.



Light grey 611T   Moka 516   Beige 532   Camel 533   Tuscan brown 534   Brown sugar 569



Yellow 53   Carrot 66   Tiger eye 119   Summer 133   Brick 572   Orange 120



Red 231   Bordeaux 236   Red wine 234   Lavender 175   Fuchsia 173   Purple 262



Lime 462   Green tea 425   Apple Green 463   Office green 443   Grass 464   Olive 426



Forest green 496   Dark mud 571   Pearl grey 643   Light blue 386   Azuleja 367   Capri 379



Turquoise 366   Peacock blue 411   Pastel blue 380   Steel blue 263   Iceberg 377   Queen blue 411



Sapphire 331   Office blue 332T   Dark blue 334T   Midnight blue 333T   Quartz grey 636   Grey 629



Old silver 625   Taupe 607   White 999   Black 651



### COMPOSITION

100% poliestere FR riciclato + GRS  
100% recycled polyester + GRS



# PETfabric.



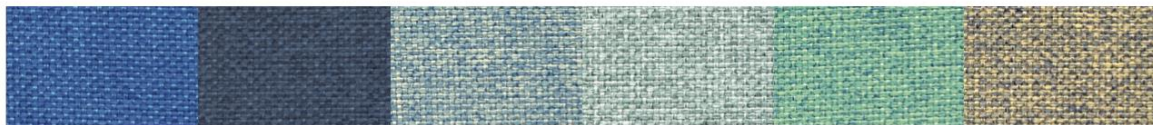
Jacket 4559    Warm grey 4560    Golden brown 456T    Chestnut 4562    Brown 4558    Sand 4513



Canarino 4055    Cachi 4056    Orangina 4105    Brick 4211    Dark Red 4210    Bordeaux 4213



Party 4254    Lilac 4253    Dreamy 4363    Sky 4360    Animae 4362    Light blue 4361



Villa 4310    Blue 4313    Azure 4311    Morning green 4467    Sailing 4465    Camo 4312



Sage 4466    Mesh green 4468    Bright green 4464    Brilliant green 4460    Underbrush 4462    Tropical 4461



Neutral grey 4511    Light grey 4613    Ash 4614    Suit grey 4615    Road 4616



### COMPOSITION

100% PET, poliestere FR riciclato + GRS  
100% PET, recycled polyester + GRS



# PETcolor.



White 2999    Milk 2509    Beige 2503    Camel 2504    Deer 2510    Sierra 2557



Yellow 2051    Orange 2104    Papaya 2103    Red 2201    Mud 2552    Dark chocolate 2556



Brick 2555    Palazzo red 2206    Ossalide 2151    Bordeaux 2203    Malva 2251    Blueberry 2252



Pistachio 2451    Green leaf 2452    Forest 2459    Peacock 2402    Sugar 2357    Poudre 2358



Ice 2612    Light blue 2351    Greece 2308    Van Gogh 2301    Midnight 2309    Blue romance 2303



Grey 2602    Infinity 2307    Rock Grey 2603    City grey 2604    Black 2651





**COMPOSITION**

90% lana naturale, 10% poliestere  
90% natural wool, 10% polyester



**ECOfelt.**

Ghost white 955E	Chalk 327	Grey 953E	Concrete 903	Beige 952	Caramel 332E
Mushroom 325	Chocolate 352	Taupe 511	Brown 605	Rust 604	Corten 516
Yellow 34	Egg 980	Mustard 54	Cob orange 997	Orange 971	Coral 336
Red 5	Pompei 47	Bordeaux 192	Marsala 973	Quartz rose 940	Salmon 317
Bubble pink 53	Pink 988	Marylin 323	Mauve 601	Agate 919	Violet 921
Purple 508	Barolo 602	Grape 603	Fresh air 976	Salvia green 334E	Acid green 611E
Cashmere green 89	Grassland 937	Tea Green 345	Leaf Green 910	Lagoon 608	Peacock blue 962
Black forest 77	Dark musk 22E	Mineral Blue 311	Biggest Splash 41	Capri 341	Avio 333E
Light blue 914	Blue yonder 200	Azuleja 318	Moonstone 512	Skyblue 942	Nynph 972
Honolulu blue 607	Blue 193	Blue Klein 322	Deep sea blue 963	Ink 329	Dark grey 923



**COMPOSITION**

96% PET - Bottiglie di plastica postconsumo.  
96% PET - Recycled plastic bottles.



**PETfelt.**



Ash 703      Fog 953P      Milk 955P      Beige 16      Tuscan brown 20      Mud 19



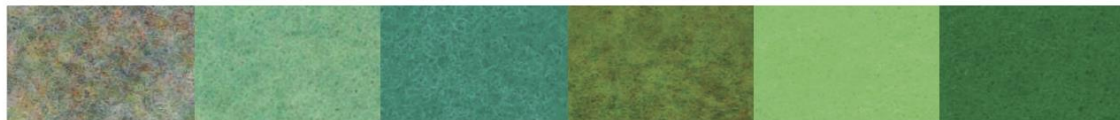
Pale yellow 41      Alabaster 32      Yellow 3      Duck Orange 43      Orange 9      Dark Orange 14



Red 6      Ruby red 27      Bordeaux 15      Pastel pink 37      Pink 17      Wisteria pink 36



Barbie 113      Fuchsia 10      Sangria 30      Grapes 23      Purple 11      Raspberry 47



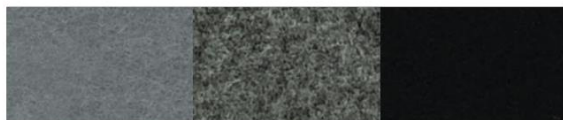
Opal 33      Celadon 39      Water green 2      Kiwy 28      Acid green 7      La salle green 12



Jungle green 31      Grey green 22      Egg blue 38      Light blue 8      Blue 13      Azure 1



Summer night 21      Charm blue 44      Pacific blue 29      Dark blue 5      Midnight 905      Rhino 903



Grey 4      Street 529      Rich black 18



**COMPOSITION**

100% poliester  
100% polyester



# Velvet.



Beige 104

Mauve 23V

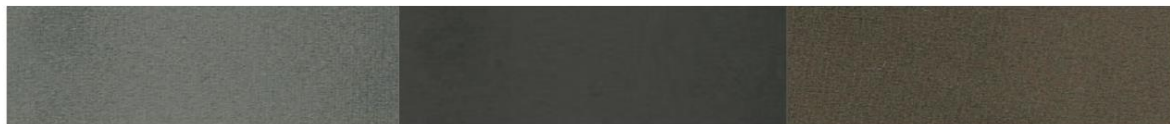
Marsala 80



Yellow 26

Cherry 10V

Bordeaux 90



Taupe 205

Graphite 617

Brown 100



Bright green 12V

Salvia green 56

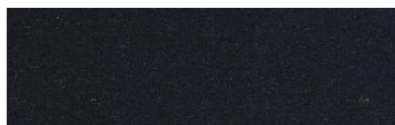
Lagoon 15V



Grey 616

Avio 16V

Deep sea blue 14V



Dark blue 666

# CAT B



## COMPOSITION

75% lana, 25% poliammide  
75% wool, 25% polyamide



# Tweed.





**COMPOSITION**

100% Trevira CS FR, poliestere Fr  
100% Trevira FR CS, polyester Fr



**Trace.**



Warm grey 9607

Cold grey 9610

Formal grey 9608



Sea 9402

Blue 9302

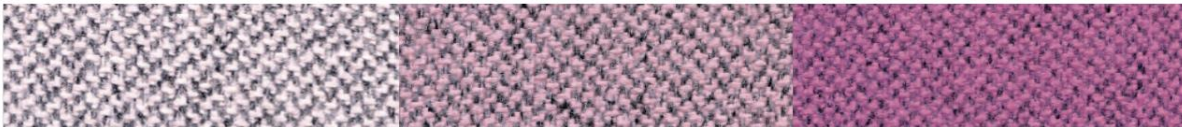
Ocean 9403



Yellow 9052

Pistachio 9452

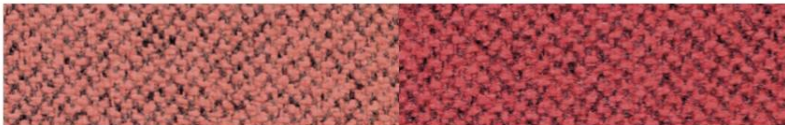
Green leaf 9455



Cloud pink 9155

Pink 9154

Blossom 9156



Salmon 9157

Strawberry 9203