

**NAME:**

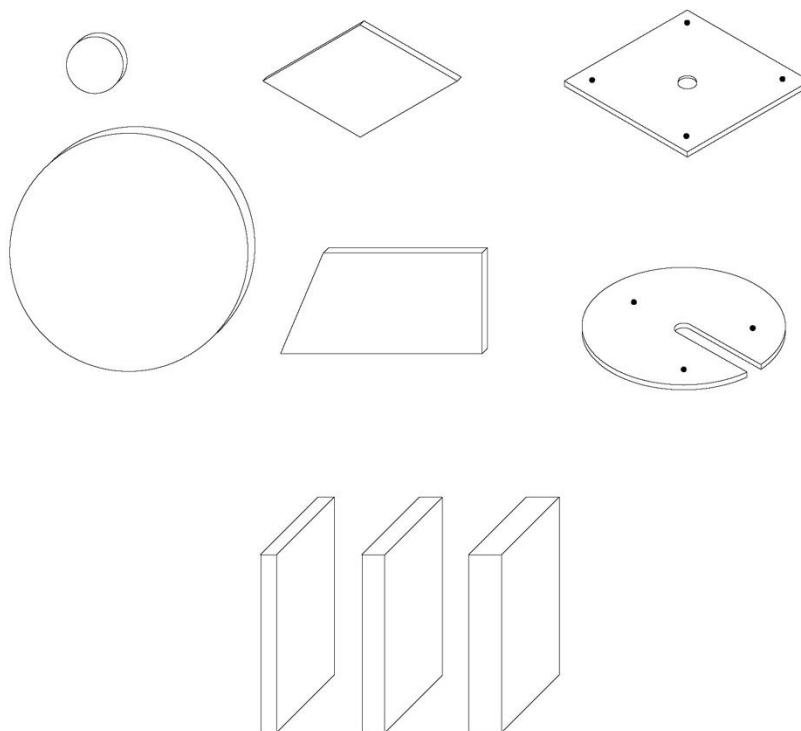
T-FRAME TAILOR MADE

**DESCRIPTION:**

Sound-absorbing panel/system, sartorial workmanship, model TAILOR MADE, composed of multilayer and stiffened structure fiber stratigraphy sound-absorbing polyester thickness 3/5 cm (1.2 o 2 in)

**APPLICATIONS:**

- Wall with velcro or magnets
- Desk
- Ceiling with velcro or magnets
- Suspended ceiling
- Baffles with magnets or cables
- Freestanding, totem



## DIMENSIONS:

- Circle: Ø 60 | 80 | 100 | 120 x THK 3 | 5 cm  
Ø 23.6 | 31.5 | 39.4 | 47.2 x THK 1.2 | 2 in
- Ellipse: L/H 120 | 160 | 180 | 200 x L/H 80 | 100 | 120 x THK 3 | 5 cm  
L/H 47.2 | 63 | 70.9 | 78.7 x L/H 31.5 | 39.4 | 47.2 x THK 1.2 | 2 in
- Hexagon: L/H 69,25 | 138,5 x L/H 60 | 120 x THK 3 | 5 cm  
L/H 27.3 | 54.5 x L/H 23.6 | 47.2 x THK 1.2 | 2 in
- Pentagon: L/H 63 | 126,2 x L/H 60 | 120 x THK 3 | 5 cm  
L/H 24.8 | 49.6 x L/H 23.6 | 47.2 x THK 1.2 | 2 in
- Rectangle: L/H 120 | 160 | 180 | 200 x L/H 60 | 80 | 100 | 120 x THK 3 | 5 cm  
L/H 47.2 | 63 | 70.9 | 78.7 x L/H 23.6 | 31.5 | 39.4 | 47.2 x THK 1.2 | 2 in

- Rectangle (Desk): L **60 | 80 | 100 | 120 | 140 | 160 | 180** x H **40 | 55** x THK **3 | 5** cm  
L **23.6 | 31.5 | 39.4 | 47.2 | 55.1 | 63 | 70.9** x H **15.75 | 21.65** x THK **1.2 | 2** in
- Rectangle (Baffle): L **80 | 100 | 120 | 140 | 160 | 180 | 200** x H **40 | 60** x THK **3 | 5** cm  
L **31.5 | 39.4 | 47.2 | 55.1 | 63 | 70.9 | 78.7** x H **15.75 | 23.6** x THK **1.2 | 2** in
- Square: L/H **60 | 80 | 120** x L/H **60 | 80 | 120** x THK **3 | 5** cm  
L/H **23.6 | 31.5 | 47.2** x L/H **23.6 | 31.5 | 47.2** x THK **1.2 | 2** in
- Triangle: L/H **60 | 120** x L/H **52 | 104** x THK **3 | 5** cm  
L/H **23.6 | 47.2** x L/H **20.5 | 40.9** x THK **1.2 | 2** in

NOTE: *Customizable panels, further shapes and sizes available on request*

#### **WEIGHT:**

- **2** kg/m<sup>2</sup> - THK **3** cm
- **0,41** lb/ft<sup>2</sup> - THK **1,2** in
- **2,5** kg/m<sup>2</sup> - THK **5** cm
- **0,51** lb/ft<sup>2</sup> - THK **2** in

NOTE: *Further thickness available on request*

## COMPOSITION:

- Soul: Sound-absorbing material made of 100% recycled material, of polyester fibers

Reaction to fire: B-s2, d0

Smoke class: F1

Certificate: Oekotex

- Finishing CAT **A**:
  - **Trevira CS** - 100% polyester  
Reaction to fire: **Class 1**  
Certificate: **Oekotex**
  - **PETfabric** – 100% recycled polyester  
Reaction to fire: **Class 1**  
Certificate: **Oekotex**
  - **PETcolor** - 100% PET, FR recycled polyester + GRS  
Reaction to fire: **Class 1**
  - **ECOfelt** - 90% wool, 10% polyester
  - **PETfelt** - 100% PET – From post-consumer plastic bottles
  - **Velvet** - 100% polyester
- Finishing CAT **B**:
  - **Tweed** - 75% wool, 25% polyamide  
Reaction to fire: **Class 1**
  - **Trace** - 100% Trevira CS FR, FR polyester  
Reaction to fire: **Class 1**  
Certificate: **Oekotex**

## RECYCLABILITY:

Recycled material panel recyclable at the end of his life,  
without dividing soul and finish

## MAINTENANCE:

Cleanable panel with specific detergents

**CERTIFICATIONS:**

• **FIRE REACTION CLASS:**

B-s2, d0



• **CE MARK:**

B-s1, d0



• **GREEN LABELS:**

GREENGUARD  
GREENGUARDGOLD



VOC EMISSION TEST Indoor Air Comfort GOLD



• **SOUND ABSORPTION REPORT:**

UNI EN ISO 354: 2003

UNI EN ISO 11654: 1998



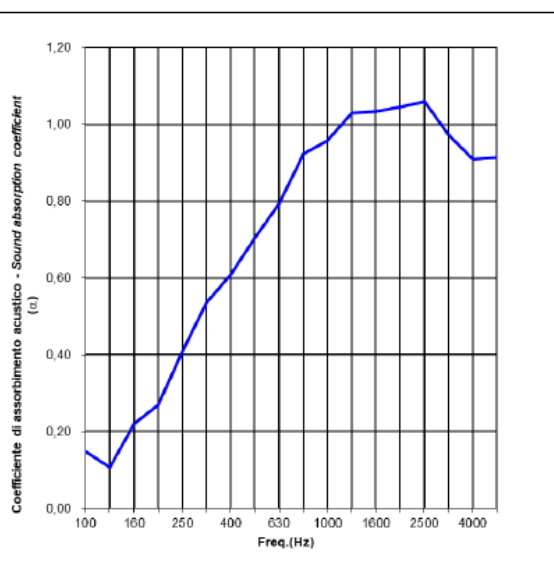
**T-FRAME (SP 3 cm):**

Elemento in prova Tested element	TAILOR MADE – 3cm
Descrizione del campione Sample description	Vedere § "Descrizione del campione in prova" del presente Report Montaggio tipo A secondo EN 354 §see § "Tested sample description" of this Report Type A mounting according to EN 354
Superficie del campione Sample surface	11.2 m <sup>2</sup>

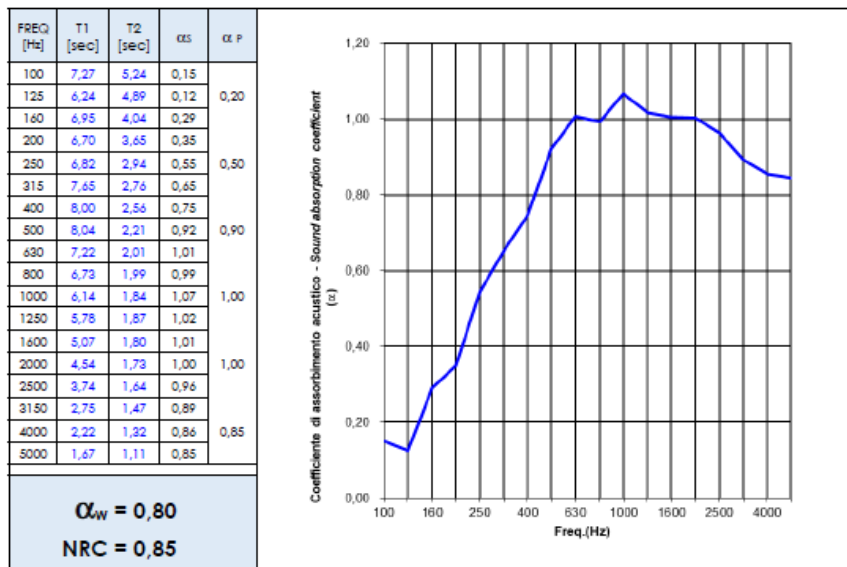
FREQ [Hz]	T1 [sec]	T2 [sec]	$\alpha_s$	$\alpha_p$
100	7,27	5,22	0,15	0,15
125	6,24	5,03	0,11	
160	6,95	4,46	0,22	
200	6,70	4,05	0,27	0,40
250	6,82	3,39	0,41	
315	7,65	3,08	0,53	
400	8,00	2,89	0,61	0,70
500	8,04	2,63	0,70	
630	7,22	2,34	0,79	
800	6,73	2,07	0,92	0,95
1000	6,14	1,96	0,96	
1250	5,76	1,83	1,03	
1600	5,07	1,75	1,03	1,00
2000	4,54	1,67	1,04	
2500	3,74	1,53	1,06	
3150	2,75	1,39	0,97	0,95
4000	2,22	1,28	0,91	
5000	1,67	1,08	0,91	

<b><math>\alpha_w = 0,70</math></b>
<b>NRC = 0,80</b>



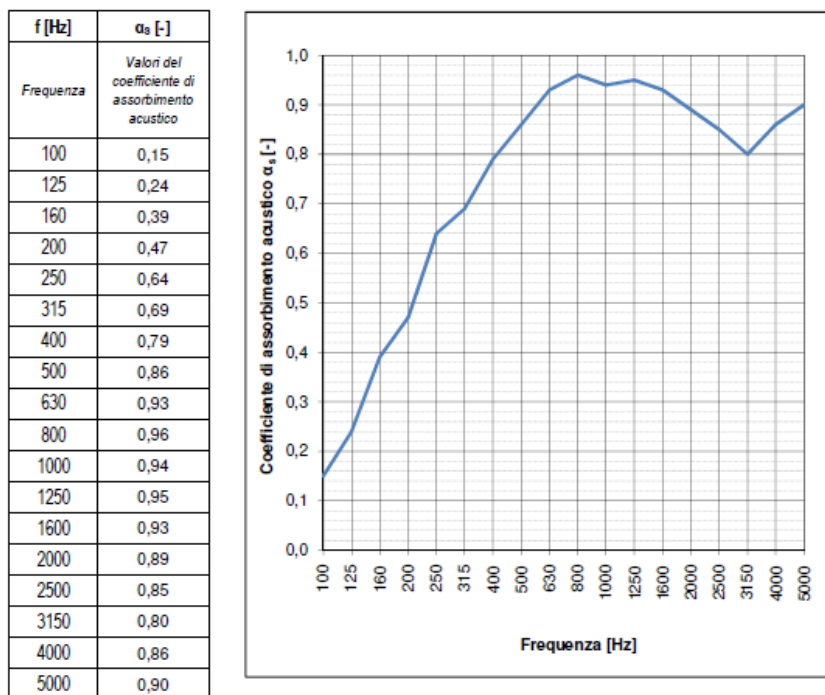
**T-FRAME (SP 4 cm):**



**T-FRAME (SP 5 cm):**

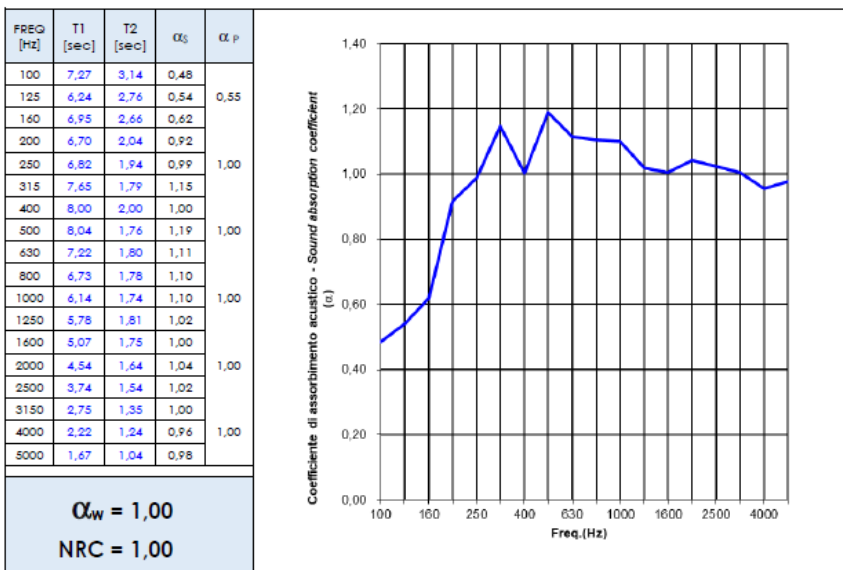
Descrizione dell'elemento di prova: "Pannelli Tailor made" spessore totale 50 mm  $\pm$  20%.  
 Tipologia di Montaggio: Montaggio Tipo A

Area dell'elemento di prova: 11,95 m<sup>2</sup>  
 Volume della camera riverberante: 161,3 m<sup>3</sup>



**T-FRAME (SP 10 cm):**

Elemento in prova Tested element	TAILOR MADE - 10cm
Descrizione del campione Sample description	Vedere § "Descrizione del campione in prova" del presente Report Montaggio tipo A secondo EN 354 Ssee § "Tested sample description" of this Report Type A mounting according to EN 354
Superficie del campione Sample surface	11,5 m <sup>2</sup>



# CAT A



## COMPOSITION

100% Trevira CS FR, poliestere Fr  
100% Trevira FR CS, polyester Fr



# Trevira CS.



Light grey 611T    Moka 516    Beige 532    Camel 533    Tuscan brown 534    Brown sugar 569



Yellow 53    Carrot 66    Tiger eye 119    Summer 133    Brick 572    Orange 120



Red 231    Bordeaux 236    Red wine 234    Lavender 175    Fuchsia 173    Purple 262



Lime 462    Green tea 425    Apple Green 463    Office green 443    Grass 464    Olive 426



Forest green 496    Dark mud 571    Pearl grey 643    Light blue 386    Azuleja 367    Capri 379



Turquoise 366    Peacock blue 411    Pastel blue 380    Steel blue 263    Iceberg 377    Queen blue 411



Sapphire 331    Office blue 332T    Dark blue 334T    Midnight blue 333T    Quartz grey 636    Grey 629



Old silver 625    Taupe 607    White 999    Black 651





### COMPOSITION

100% poliestere FR riciclato + GRS  
100% recycled polyester + GRS



# PETfabric.



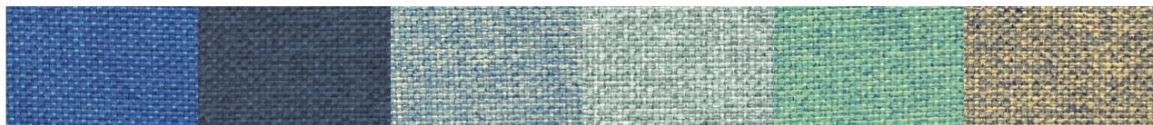
Jacket 4559    Warm grey 4560    Golden brown 456T    Chestnut 4562    Brown 4558    Sand 4513



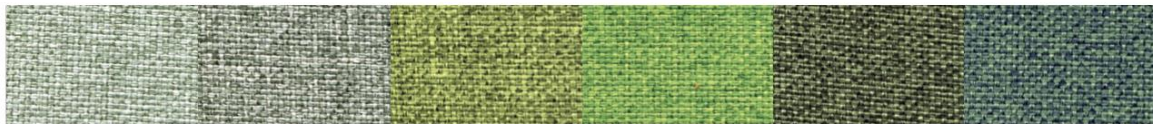
Canarino 4055    Cachi 4056    Orangina 4105    Brick 4211    Dark Red 4210    Bordeaux 4213



Party 4254    Lilac 4253    Dreamy 4363    Sky 4360    Anima 4362    Light blue 4361



Villa 4310    Blue 4313    Azure 4311    Morning green 4467    Sailing 4465    Camo 4312



Sage 4466    Mesh green 4468    Bright green 4464    Brilliant green 4460    Underbrush 4462    Tropical 4461



Neutral grey 4511    Light grey 4613    Ash 4614    Suit grey 4615    Road 4616



**COMPOSITION**

100% PET, poliester FR riciclato + GRS  
100% PET, recycled polyester + GRS



# PETcolor.



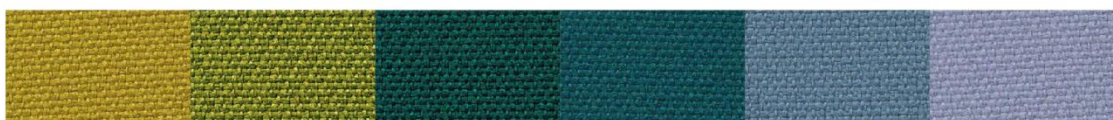
White 2999    Milk 2509    Beige 2503    Camel 2504    Deer 2510    Sierra 2557



Yellow 2051    Orange 2104    Papaya 2103    Red 2201    Mud 2552    Dark chocolate 2556



Brick 2555    Palazzo red 2206    Ossalide 2151    Bordeaux 2203    Malva 2251    Blueberry 2252



Pistachio 2451    Green leaf 2452    Forest 2459    Peacock 2402    Sugar 2357    Poudre 2358



Ice 2612    Light blue 2351    Greece 2308    Van Gogh 2301    Midnight 2309    Blue romance 2303



Grey 2602    Infinity 2307    Rock Grey 2603    City grey 2604    Black 2651





**COMPOSITION**

90% lana naturale, 10% poliestere  
90% natural wool, 10% polyester



**ECOfelt.**

Ghost white 955E	Chalk 327	Grey 953E	Concrete 903	Beige 952	Caramel 332E
Mushroom 325	Chocolate 352	Taupe 511	Brown 605	Rust 604	Corten 516
Yellow 34	Egg 980	Mustard 54	Cob orange 997	Orange 971	Coral 336
Red 5	Pompei 47	Bordeaux 192	Marsala 973	Quartz rose 940	Salmon 317
Bubble pink 53	Pink 988	Marylin 323	Mauve 601	Agate 919	Violet 921
Purple 508	Barolo 602	Grape 603	Fresh air 976	Salvia green 334E	Acid green 611E
Cashmere green 89	Grassland 937	Tea Green 345	Leaf Green 910	Lagoon 608	Peacock blue 962
Black forest 77	Dark musk 22E	Mineral Blue 311	Biggest Splash 41	Capri 341	Avio 333E
Light blue 914	Blue yonder 200	Azuleja 318	Moonstone 512	Skyblue 942	Nynph 972
Honolulu blue 607	Blue 193	Blue Klein 322	Deep sea blue 963	Ink 329	Dark grey 923



**COMPOSITION**

96% PET - Bottiglie di plastica postconsumo.  
96% PET - Recycled plastic bottles.



**PETfelt.**



Ash 703      Fog 953P      Milk 955P      Beige 16      Tuscan brown 20      Mud 19



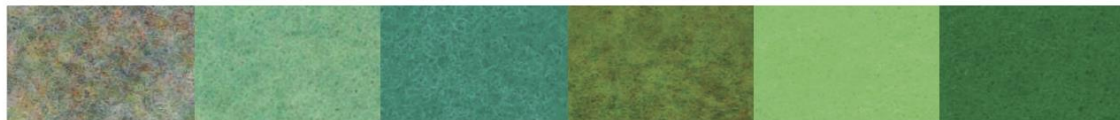
Pale yellow 41      Alabaster 32      Yellow 3      Duck Orange 43      Orange 9      Dark Orange 14



Red 6      Ruby red 27      Bordeaux 15      Pastel pink 37      Pink 17      Wisteria pink 36



Barbie 113      Fuchsia 10      Sangria 30      Grapes 23      Purple 11      Raspberry 47



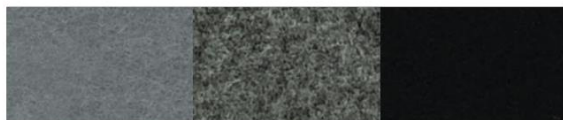
Opal 33      Celadon 39      Water green 2      Kiwy 28      Acid green 7      La salle green 12



Jungle green 31      Grey green 22      Egg blue 38      Light blue 8      Blue 13      Azure 1



Summer night 21      Charm blue 44      Pacific blue 29      Dark blue 5      Midnight 905      Rhino 903



Grey 4      Street 529      Rich black 18





**COMPOSITION**

100% poliester  
100% polyester



# Velvet.



Beige 104

Mauve 23V

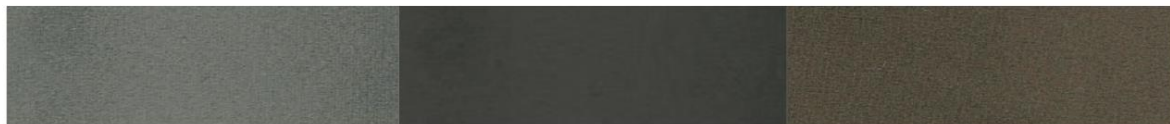
Marsala 80



Yellow 26

Cherry 10V

Bordeaux 90



Taupe 205

Graphite 617

Brown 100



Bright green 12V

Salvia green 56

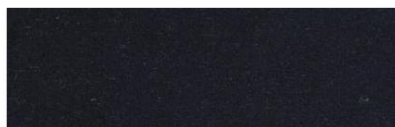
Lagoon 15V



Grey 616

Avio 16V

Deep sea blue 14V



Dark blue 666

# CAT B



## COMPOSITION

75% lana, 25% poliammide  
75% wool, 25% polyamide



# Tweed.



Almond 505

Sand 502

Rose 503

Brown 504

Coffee 551

Chestnut 552



Banana 51

Dark gold 52

Mandarin 102

Cadmium 101

Orange 2105

Terra di Siena 103



Pistachio 451

Pond 2457

Foliage 452

Racing green 453

Teal blue 454

Blue 303



Aqua green 455

Air blue 351

River 2460

Grey blue 301

Orchid 251

Purple 252



Ash grey 601

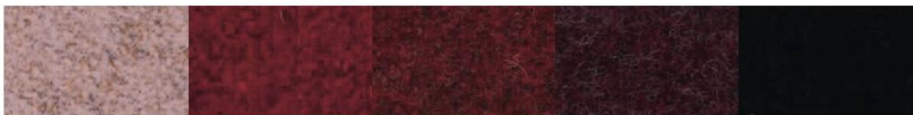
Melting grey 2606

Rock grey 602

Old brown 553

Dark grey 603

Night blue 302



Pink 152

Red 211

Antique ruby 201

Berry 202

Full black 651



**COMPOSITION**

100% Trevira CS FR, poliestere Fr  
100% Trevira FR CS, polyester Fr



**Trace.**



Warm grey 9607

Cold grey 9610

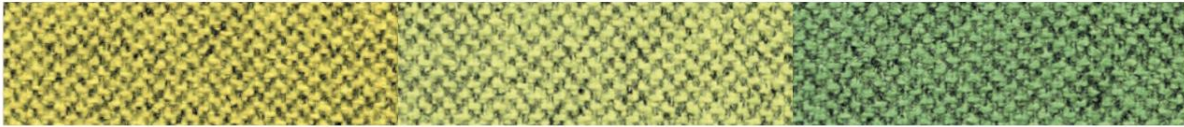
Formal grey 9608



Sea 9402

Blue 9302

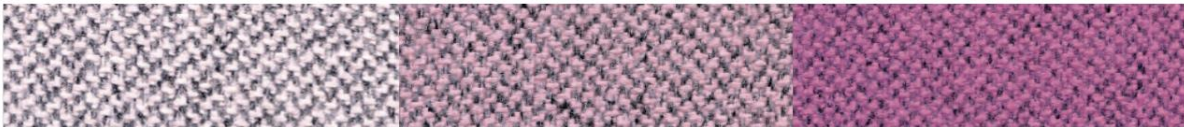
Ocean 9403



Yellow 9052

Pistachio 9452

Green leaf 9455



Cloud pink 9155

Pink 9154

Blossom 9156



Salmon 9157

Strawberry 9203